



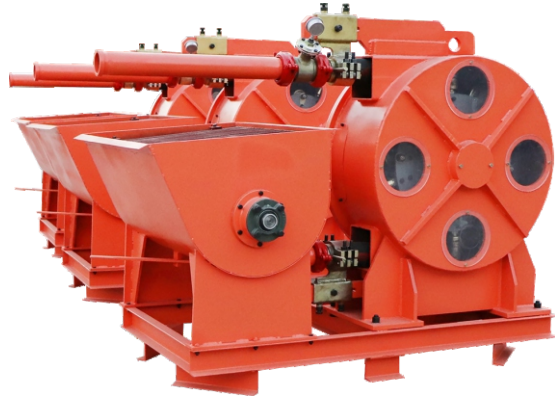
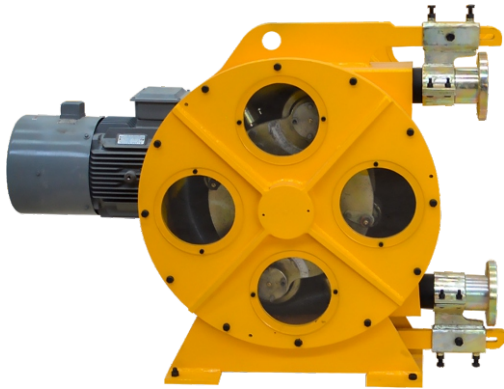
GAODETEC

## GH125-915R

# Heavy Duty Hose Pump

**We full strive for shared NORMS and VALUES:**

- ★ Safety and Stringent quality control
- ★ Maneuverability and Operator comfort
- ★ Reliability
- ★ Technical sophistication & after-sales full support



[sales5@gaodetec.com](mailto:sales5@gaodetec.com)

## Fields of Application

### ■ Construction

Conveying and spraying of mortar and concrete



### ■ Pharmacy

Conveying of corrosive and poisonous materials



### ■ Textile Mill

Conveying of fiber contained fluid, dye and waste water



### ■ Dye Making

Conveying of coating, paint and color



### ■ Water Treatment

Conveying of water and waste water



### ■ Papermaking

Conveying of pulp, color and glues



### ■ Mining

Conveying of mineral waste residue



### ■ Ceramic

Conveying of glaze slip and color



### ■ Brewery and Beverage

Conveying of beer, wine, milk, juice, additive and residue



### ■ Underground Engineering

Conveying of mud fluid in TBM



## **Advantages:**

No seals

No valves

Self-priming

Only squeeze hose replace

Dry-running without damage

Reversible

No contact between product and mechanical parts

Able to pump products with solid parts inside

Easy maintenance, low-cost, short down time

## **Perfect Pump for:**

Corrosive

Abrasives

Shear sensitive fluids

High viscosity fluids

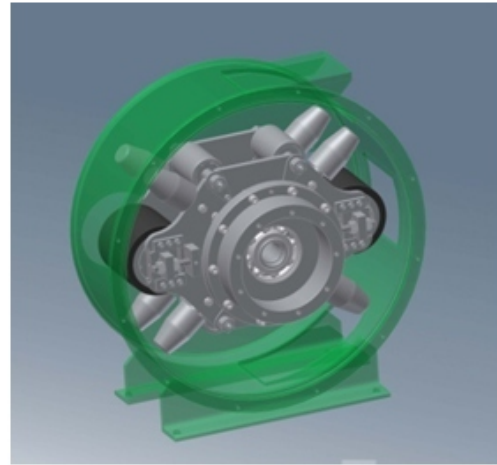
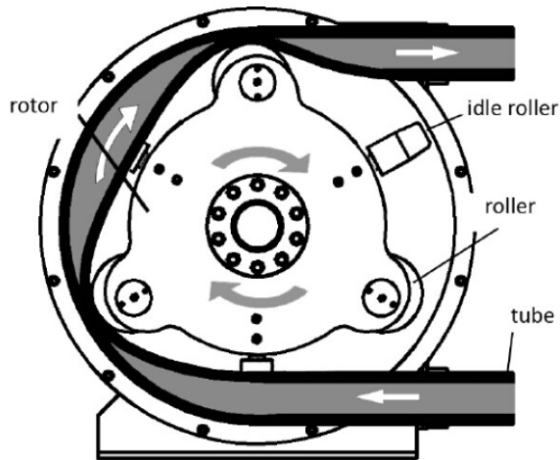
High density fluids

Large solids

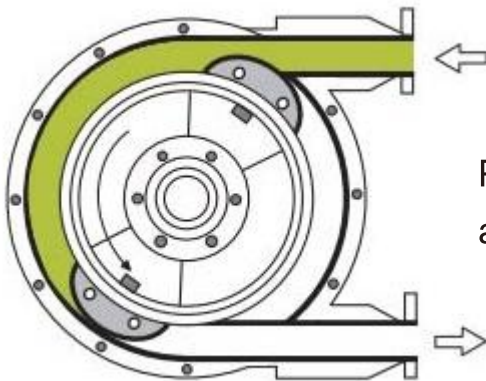
Metering ( $\pm 1\%$ )

High Pressure (3 MPa)

## Working Principle



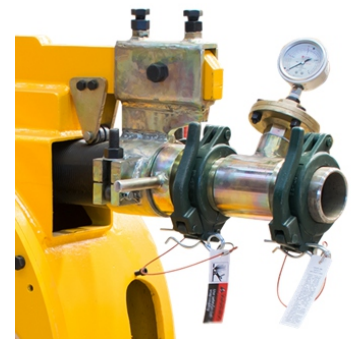
GH series industrial hose pump (squeeze pump) consists mainly of pump house, rotor, roller, idle roller, squeeze hose and driving unit. The squeeze hose is U-shape in pump house, when rotor drives roller to rotate, hose is deformed. After the roller rotate, the deformed hose recover by its elasticity. Thus the negative pressure in this hose is generated, sucking slurries, and discharging through outlet under roller's push, finally forms pressure conveying of slurries.



Press shoe structure could be customized according to different requirement

## GAODE Hose Pump Main Product Feature

1. Adopts 2 or 3 squeeze rollers according to the requirements.
2. Extrusion interference can adjust via scale dial, bolt fixing.
3. Pump house adopt steel plate welded.
4. Squeeze roller and pump core adopt galvanized process, avoid rust.
5. Bearings adopts China Famous Brand Harbin full sealed bearings.
6. The joint adopts carbon steel safety joints, and the clamp adopts concrete pump special high pressure and quick clamp.



## GAODE Hose Pump Optional Parts

### 1. Different drive type.

Electric motor, hydraulic motor and diesel engine for option.

### 2. ABB /Siemens frequency converter.

Frequency converter is used for control pump speed, achieving variable output.

### 3. Hose leak detector.

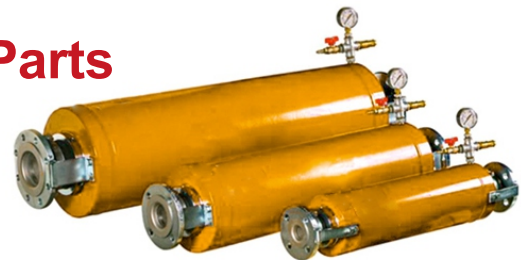
Stops the pump in case of hose rupture via liquid level sensor.

### 4. Pulsation Dampener

Pulsation dampener could eliminate up to 90% of discharge pulsations.

### 5. Squeeze Hose

Natural Rubber, Nitrile Rubber and EPDM materials hose for option.



Pulsation Dampener



Hose leak detector



ABB frequency converter



# GAODE EQUIPMENT CO., LTD.



Model	GH125-915B
Output Capacity	55m <sup>3</sup> /h
Working Pressure	0.6Mpa
Rotate Speed	35rpm
Squeeze Hose ID	125mm
Motor Power	22Kw
Russian client use it for lime milk pumping.	

